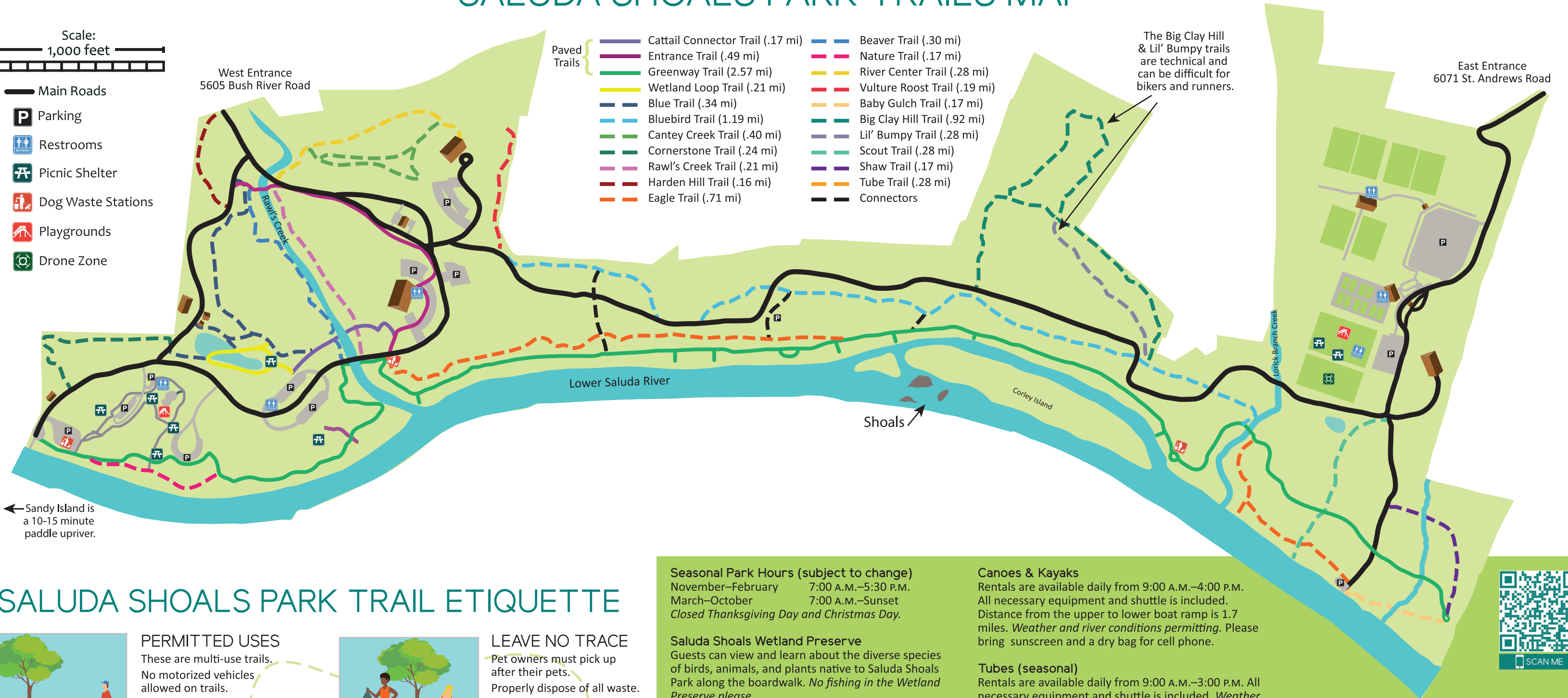


# SALUDA SHOALS PARK TRAILS MAP



- Main Roads
- Parking
- Restrooms
- Picnic Shelter
- Dog Waste Stations
- Playgrounds
- Drone Zone



← Sandy Island is a 10-15 minute paddle upriver.

- Paved Trails**
- Cattail Connector Trail (.17 mi)
  - Entrance Trail (.49 mi)
  - Greenway Trail (2.57 mi)
  - Wetland Loop Trail (.21 mi)
  - Blue Trail (.34 mi)
  - Bluebird Trail (1.19 mi)
  - Cornerstone Trail (.24 mi)
  - Rawl's Creek Trail (.21 mi)
  - Harden Hill Trail (.16 mi)
  - Eagle Trail (.71 mi)
  - Beaver Trail (.30 mi)
  - Nature Trail (.17 mi)
  - River Center Trail (.28 mi)
  - Vulture Roost Trail (.19 mi)
  - Baby Gulch Trail (.17 mi)
  - Big Clay Hill Trail (.92 mi)
  - Lil' Bumpy Trail (.28 mi)
  - Scout Trail (.28 mi)
  - Shaw Trail (.17 mi)
  - Tube Trail (.28 mi)
  - Connectors

The Big Clay Hill & Lil' Bumpy trails are technical and can be difficult for bikers and runners.

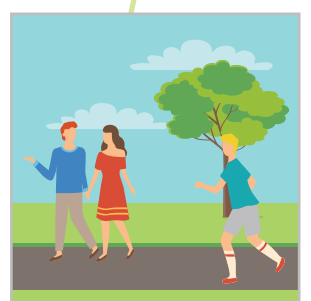
## SALUDA SHOALS PARK TRAIL ETIQUETTE



**PERMITTED USES**  
 These are multi-use trails.  
 No motorized vehicles allowed on trails.  
 Dog are permitted on a leash.



**LEAVE NO TRACE**  
 Pet owners must pick up after their pets.  
 Properly dispose of all waste.  
 Leave what you find.



**SHARE THE TRAILS**  
 Be considerate of fellow trail users.  
 Always travel at safe speeds.  
 Stay to the right except to pass.  
 Announce yourself by saying "on your left" when passing from behind.  
 Stop at all road crossings and yield to traffic.  
 Don't block the trail.



**RESPECT WILDLIFE**  
 Observe animals from a safe distance.  
 Always yield to wildlife on the trails.  
 Watch for wildlife crossing the road when driving.  
 Never feed wildlife.  
 Remember, this is their home.

**Seasonal Park Hours (subject to change)**  
 November–February 7:00 A.M.–5:30 P.M.  
 March–October 7:00 A.M.–Sunset  
 Closed Thanksgiving Day and Christmas Day.

**Saluda Shoals Wetland Preserve**  
 Guests can view and learn about the diverse species of birds, animals, and plants native to Saluda Shoals Park along the boardwalk. *No fishing in the Wetland Preserve please.*

**Saluda Splash**  
 Saluda Splash is a zero-depth, interactive water playground. Open May through September. For hours and fees, visit [www.icrc.net](http://www.icrc.net).

**Fishing**  
 Fishing is allowed along the riverbanks and in the creeks. Must have a current SC fishing license. Fishing supplies are not sold in the park.

**Saluda Shoals Park Passes**  
**Saluda Shoals Park Pass**  
 This 12-month pass entitles access to Saluda Shoals Park during regular park hours.

**Fisherman's Pass**  
 This 12-month pass provides 24-hour access to the park using a coded entry system.

**Barking Lot Pass**  
 A fenced, off-leash area for dogs. Dogs must be current on required shots and spayed/neutered. Additional policies apply.

**Canoes & Kayaks**  
 Rentals are available daily from 9:00 A.M.–4:00 P.M. All necessary equipment and shuttle is included. Distance from the upper to lower boat ramp is 1.7 miles. *Weather and river conditions permitting.* Please bring sunscreen and a dry bag for cell phone.

**Tubes (seasonal)**  
 Rentals are available daily from 9:00 A.M.–3:00 P.M. All necessary equipment and shuttle is included. *Weather and river conditions permitting.* Please bring sunscreen and a dry bag for cell phone.

**Team Building/Low Ropes Challenge Course**  
 Team building activities are available for both youth and adults. Call 803-213-2056 for information.

**Disc Golf**  
 18-hole disc golf course is available for play on the east end of the park. Bring your own disc.

**Meeting Facility Rentals**

- The River Center offers 5,000 sf of meeting space for large and small gatherings.
- The Environmental Center has two classrooms, an auditorium, and outdoor deck.
- Picnic shelters throughout the park accommodate groups from 25 to 250.

Visit [www.icrc.net](http://www.icrc.net) or call 803-772-1228 for details.

**The Courts Tennis Center**  
 The Courts features six clay and four hard surface courts for tournament and recreational play. For information and rentals, call 803-772-1228.

**The Fields**  
 Saluda Shoals Park is home to six soccer, lacrosse, and multi-use fields for tournament and recreational play. For details call 803-772-1228.

**Leo's Landing Inclusive Playground**  
 Located on the east end of the park, this four-acre universally inclusive playground is designed for children and adults of all abilities.

**Help Support Saluda Shoals Park**  
 Donate to the Saluda Shoals Foundation by calling 803-213-2035 or visit [www.saludashoalsfoundation.org](http://www.saludashoalsfoundation.org).

**For More Information**  
 Visit [www.icrc.net](http://www.icrc.net) or call 803-772-1228.

**Contact a Saluda Shoals Park Ranger**  
 For assistance, park rangers can be reached at 803-479-9886.

